

Built Feature

Green Office Refurbishment

No. 2 Caen Field

An existing 1960's shop provided a number of difficulties for the proposed Solicitors office.

The deep plan building meant that the centre of the building was dark and unventilated, and the centre room had no window, and was an unpleasant space. Gale & Snowden design maximises natural light and caters for the client requirement for a degree of acoustic separation by using sandblasted glass blocks to obtain borrowed light from the reception. Natural materials have been used throughout including organic paints, waxes, wool carpet and ash furniture.

Natural ventilation was not possible and an energy efficient heat recovery system was used. The Solicitors have benefited from a new clean image and a healthy office environment.



Practice

Gale & Snowden Architects seek to create ecologically sustainable designs.

Emphasis is placed on the integration of buildings and landscapes, people and their environments, to provide ecologically sustainable systems.

The practice undertakes new build and renovation work for a wide range of private, community and commercial clients.

Materials are chosen to be low in embodied energy, from sustainably managed or recycled sources, non-toxic and as local as possible.

Attention to detail and incorporating simple passive design methods such as passive solar gain, ventilation, breathing and heating systems are all characteristics of Gale & Snowden designs.

Services

Full RIBA services from conception to completion for all building and landscape work. Project Management. Ecological design reports. Furniture and display design. Planning consultancy. Energy advice and training. NHER and SAP ratings. Presentation work and model building. Graphics, desk top publishing and internet web design. Measured building surveys.

Contact

Gale & Snowden Architects
18 Market Place, Bideford
N. Devon, EX39 2DR
Tel: 01237 474952
Fax: 01237 425669 www.ecodesign.co.uk
galesnow@ecodesign.co.uk
D.J.GALE BA (Hons) Dip.Arch.
(Cant) ARB RIBA
I.M.SNOWDEN BSc (Hons)
Dip Arch (Abdn) ARB RIBA

G
A
L
E
&
S
N
O
W
D
E
N

Newsletter

No. 4

Genesis Phase II underway

The second phase of the Genesis project, to convert a derelict hotel into a multi storey community complex, is now well underway in Great Torrington, Devon. Due to the structural challenges presented, a new roof has been designed and is shown below being constructed on site. The first part of Phase II, The Civil War Museum, was completed at the beginning of the year and is open to the public. Why not visit the Museum and the Historic Town.



Woolsery's games area

Phase 1 of the Lottery funded Sports & Community Hall in North Devon has been completed. The outside games area can be used for a number of activities including tennis courts, net ball, basketball and five a side football. Design work for the new hall building has been completed and work will be starting on site in the Autumn.

Publications

A publication 'The Green Guide to Specification' from the BRE, provides detailed environmental information on a wide range of building materials. Contact *The Centre for Sustainable Construction* on 01923 664462

This issue

Trelowarren Environmental Tourism, Cornwall	2
Environmental Training Centre, London	3
BRE - External Wall Insulation <i>Good Practice Guide</i>	3
Design Feature - Office Refurbishment, Braunton	4

News in brief

Design Advice: Free consultancy advice is now available for all new or renovation building projects or groups of buildings over 500m². Contact us to find out more.

Tetbury Arts Centre: Gale & Snowden has been commissioned to design an Arts Centre in Tetbury at the disused Railway Goods Shed near the town centre. An Arts consultant is working with the community to establish the arts requirements. Design work commences later in the summer.

BRE Good Practice Guide: Gale & Snowden have been commissioned by the Department of the Environment Transport and the Regions (DETR) to research and produce a Good Practice Guide on External Wall Insulation.

Small Works launch

Gale & Snowdens new service includes Planning and Building Regulation Applications for a reduced fixed fee. Contact us to obtain a *Small Works* leaflet.

www.ecodesign.co.uk

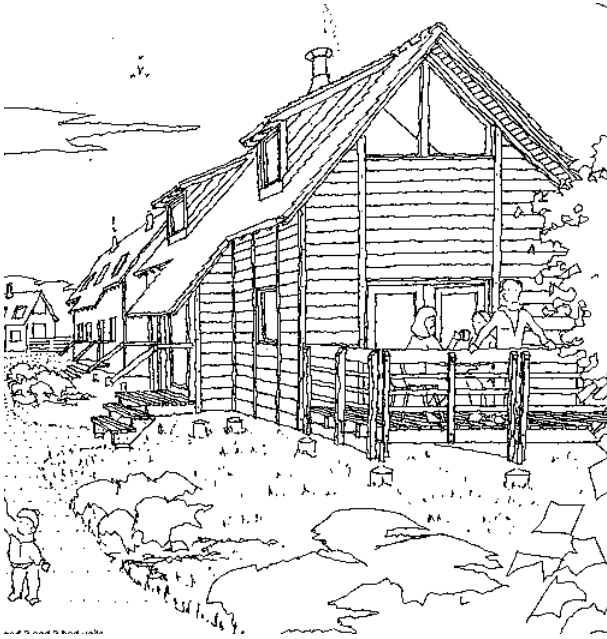
The long awaited and much talked about redesign of our web site is imminently upon us. Cartoonist & Web designer, Andrew Griffiths, designed the site and provides a web design and graphic art service, contact Andy on 01271 328270



G
A
L
E
&
S
N
O
W
D
E
N

Projects

Green Tourism at Trelowarren, Cornwall



Initial design ideas

Gale & Snowden have completed initial design ideas for an environmental development at Trelowarren on the Lizard Peninsula, Cornwall.

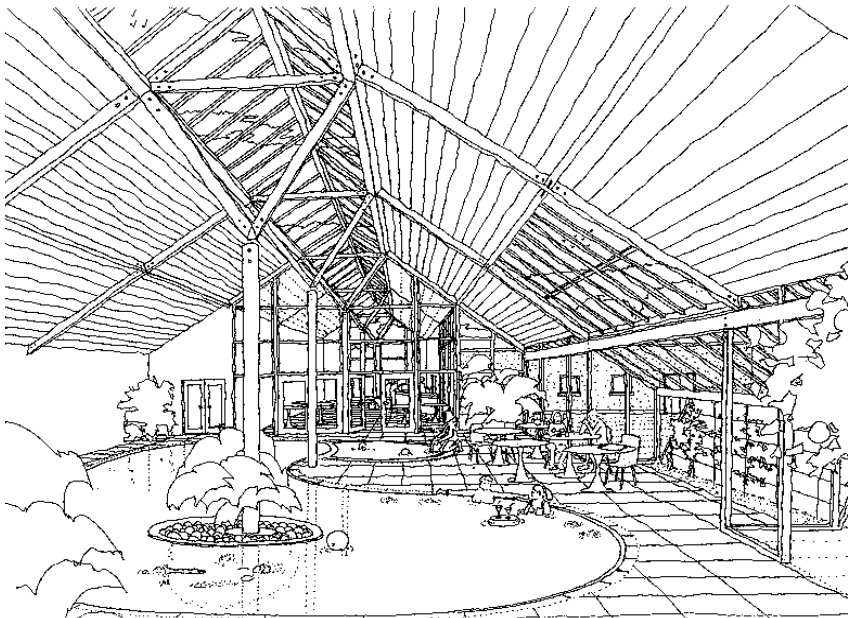
The proposal intends to point the way forward for environmentally sensitive tourism for the next millennium. The design intends to remove a large existing camp site and associated facilities and replace it with a sensitively designed timeshare development.

The development includes the restoration of several existing buildings, new reception and leisure facilities, including a swimming pool, timber frame new build lodges and the restoration of an historical botanical walled garden. Wildlife corridors and forest gardens ensure that biodiversity and privacy are maintained. The initial designs are being refined.

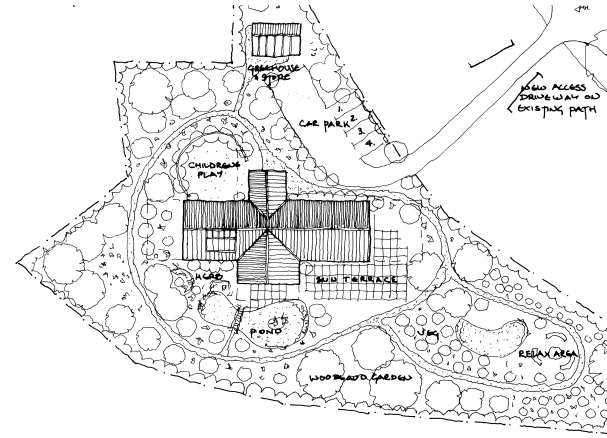
For further information and publicity material, please contact our office.

Design features:

- CO2 Neutral development
- Wood-coppiced boilers
- Natural materials
- Natural ventilation
- Locally sourced materials & labour,
- Re-enforcing the local economy and providing local employment.
- Forest gardens
- Wild life corridors
- Non toxic materials
- Recycling buildings -
- Restoration of several large disused buildings
- Restoration of historical botanical gardens -
- Ensuring the survival of an historic site



Environmental Training Centre in London



Gale & Snowden have completed the initial design for a new Environmental Training Centre in Tottenham, London for Church Road Training Service (CRTS). The design includes an energy efficient timber frame construction incorporating sustainable materials and local labour. The building is situated on an allotment site and is to continue its small scale horticulture past by incorporating allotment spaces and permaculture gardens for food production. The building will be used to train and help find employment for a wide range of local people, the accommodation includes a large meeting/teaching room, computer suite, crèche and cafe which opens out into the garden.

The landscape work has begun on site with volunteers, and the go ahead has been given for Planning Application drawings.

This project will bring a much needed community service to the people of Tottenham and ensure that the good work of CRTS continues into the future.

Product highlight - wind-catchers

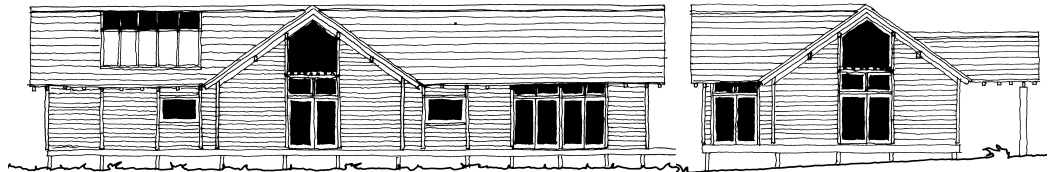
Passive ventilation design in buildings provides ventilation to occupants using the least amount of resources. Mechanical ventilation drawbacks include the use of equipment that is high in embodied energy and the consumption of energy during operation. By utilising the design of the building, passive ventilation takes advantage of the natural passage of air without the need for high energy consuming equipment. Windcatchers are able to aid passive ventilation by directing air in and out of buildings.

More information on windcatchers

Whilst windcatchers can be designed individually, they can also be obtained as proprietary items from companies such as Monodraft who can be contacted on 01494 464858.

Woolsey Sports & Community Hall windcatchers

The windcatchers for the proposed Hall will help naturally ventilate the building. The inclusion of Carbon Dioxide detectors in the roof of the main hall allows the rate of ventilation to be varied according to the number of people using the hall. Ventilation openings in the wall will also allow the users of the hall to vary the ventilation rates according to their needs.



Good Practice Guide - External Wall Insulation

Gale & Snowden as registered consultants to the BRE are undertaking research for the DETR / BRE on a Good Practice Guide for the use of External Wall Insulation (EWI). The guide is directed at Architects and specifiers considering using EWI for the first time. Gale & Snowden are able to provide impartial expert advice to Local Authorities and specifiers on the use of various EWI systems.

Why insulate externally?

EWI can be used for both refurbishment and new build projects. The benefits are:

- improve thermal performance
- elimination of cold bridging
- incorporate thermal mass of walls