

Built Feature

Genesis community complex



Genesis Community facilities open - Phase II of the Genesis project has opened to the public. Facilities include a new Library and Tourist information centre & offices. The building complements the facilities following completion of Phase I. Phase II centred on the refurbishment of the Grade II Regency period 'Castle Hill Hotel'. Features incorporated include: traditional lime products, high levels of insulation throughout, natural ventilation design to remove fungal attack (non-chemical), reinstatement of listed building features such as a feature staircase



Practice

Gale & Snowden Architects seek to create ecologically sustainable designs

Emphasis is placed on the integration of buildings and landscapes, people and their environments, to provide ecologically sustainable systems

The practice undertakes new build and renovation work for a wide range of private, community and commercial clients

Materials are chosen to be low in embodied energy, from sustainably managed or recycled sources, non-toxic and as local as possible

Attention to detail and incorporating simple passive design methods such as passive solar gain, ventilation, breathing and heating systems are all characteristics of Gale & Snowden designs

Services

Nationwide RIBA services from conception to completion for all building and landscape work. Registered BREEAM Assessment & Certification. Environmental Design Advice. Planning consultancy. Furniture and display design. Measured building surveys. External Wall Insulation specialist Consultancy. Energy advice and training. NHER and SAP ratings. Presentation work and model building. Graphics and internet web design.

Contact

Gale & Snowden Architects
18 Market Place, Bideford
N. Devon, EX39 2DR
Tel: 01237 474952
Fax: 01237 425669
www.ecodesign.co.uk
galesnow@ecodesign.co.uk

G
A
L
E
&
S
N
O
W
D
E
N

Newsletter

No. 5



Environmental Buildings are Best Value

It is now official from the Government that buildings designed in an environmentally sustainable way are considered to contribute to delivering Best Value. Buildings need to consider wider environmental, social and economic issues in order to deliver true value. Measures which add value include; reducing our use of finite resources, minimising pollution, providing healthy and safe environments, reinforcing local traditions, materials and economies. Providing durability and low maintenance with high quality design and materials and being aware of life time costings

Publications - Building the 21st Century Home by David Rudlin & Nicholas Falk published by Architectural Press. An URBED manifesto that seeks to argue for a sustainable urban renaissance. It is well presented and easily readable with copious illustrations. A landmark publication that should be read by all those interested in sustainable urban development in the UK

Woolery Sports & Community Hall - One of the most environmentally sensitive public buildings in the UK is about to be opened. Designed by Gale & Snowden it will be featured in the next Newsletter and in the local and national press



This issue

Tetbury Goods Shed Community Arts Centre	2
Modular Environmental kit house launch	3
Lynton Learning 2000	3
Design Feature - Genesis Community Complex	4
Phase II	4

News in brief

BRE Design Advice: Contact Gale & Snowden to undertake **free** environmental design consultancy, funded by the DETR, for refurbishment or new build projects

Show you are Green: We are registered BREEAM (Building Research Establishment Environmental Assessment Method) Assessors, able to undertake authoritative and independent assessment for new and existing buildings. For further information tel 01237 474952 or breeam.co.uk

External Wall Insulation (EWI): Gale & Snowden have completed the BRE 'Good Practice Guide 293' for EWI and now provide a specialist EWI consultancy service. Work for Rugby Borough Council for the refurbishment of BISF Housing has been completed

Village Halls Go Green: Gale & Snowden have been commissioned to design a series of environmental community halls for Selworthy, Fivehead and Norton Sub-Hamdon

Green Tourism in Cornwall: Phase 1 of a green time-share project has started on site. The project will be one of the best examples of environmentally sensitive tourism in the UK.

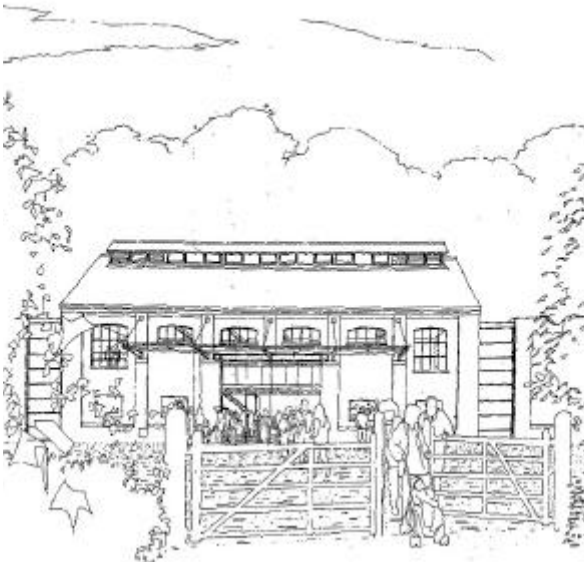
www.ecodesign.co.uk: Visit to see web site update for sustainable design



G
A
L
E
&
S
N
O
W
D
E
N

Projects

Tetbury Goods Shed - Community Arts Centre



View of Tetbury Goods Shed entrance to the new arts centre complex

Development Study

Initial design work for the new multi purpose hall/theatre, cinema and arts workshops is nearing completion following community design with Arts and Cinema specialists input

The open feel of the original Victorian Railway Goods Shed is being retained by using it as the main foyer for the new venue and the original large canopy is to be refurbished to protect the new entrance

A substantial new build element is included to contain the main function spaces and workshops

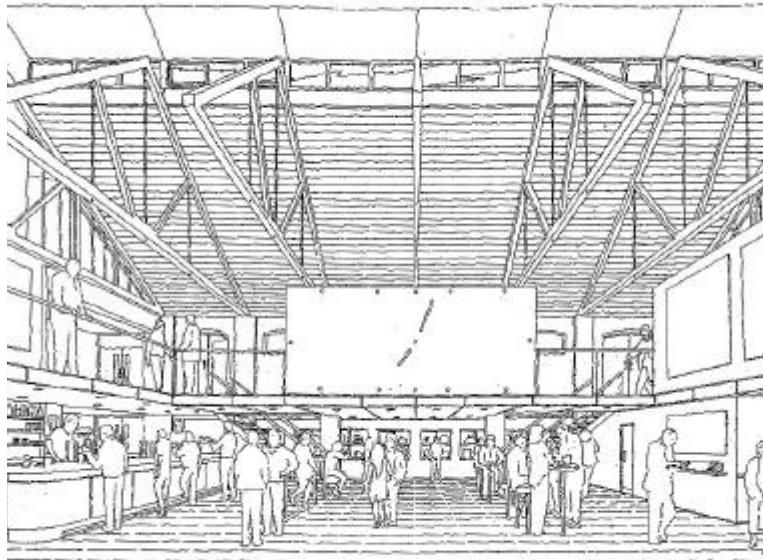
The project benefited from the BRE Design Advice service which provided free funding for an environmental consultancy

The first round of the Lottery funding has been applied for and following a Planning Application other funders will be approached

Watch this space for news on this exciting project's progress

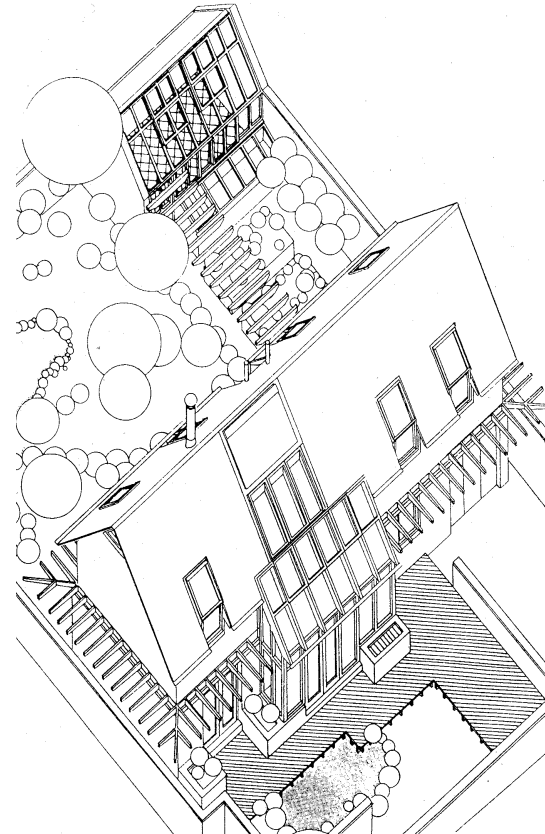
Design features:

- Sympathetic conversion and restoration of Victorian Goods Shed
- Optimal Use of daylight including glazed roof lantern
- Natural Ventilation
- Sustainably sourced materials, natural non-toxic and low maintenance
- Existing windows, entrance canopy, sliding doors, roof trusses, slate roof renovated & existing cast iron riveted lintels/beams refurbished
- High levels of insulation
- Mineral & organic paints and stains
- Low water use appliances & rainwater collection
- External amphitheatre and wildlife habitat creation



Internal view of Goods Shed converted to the foyer for the new multi-use arts complex

Modular Environmental kit housing



Axonometric illustration of the Kit house

Product highlight - timber treatment

Conventional chemical treatment of timber uses highly toxic substances to attempt to prevent fungal and beetle attack. Conventional chemicals are very toxic to all animals including humans. By specifying timber resistant to attack (eg: hardwood and correct specification of some softwoods) and preventing moisture build up in/near the timbers the reasons for attack is removed

At the Genesis project Gale & Snowden, worked with Hutton Rostrum to remove timbers which had been attacked and create environments that ensured future attack will not occur - no chemicals were used

If pre-treating, our research suggests that the least damaging substance for new timbers is D.O.T (Disodium Octaborate tetrahydrate) which contains water based Boron

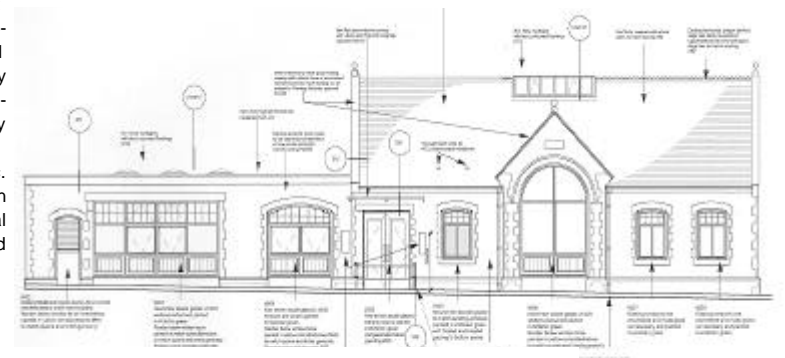
Modular Environmental Building

Gale & Snowden are developing ecological kit houses for self build or complete prefabrication. They consist of a simple superinsulated timber frame core structure that can be enhanced by a variety of features and add on components

Features include: Modular timber frame units, moisture permeable construction, superinsulation using recycled newspaper, airtight construction to prevent heat loss through the fabric of the building, high performance triple glazed timber windows and doors, materials: sustainably sourced, non-toxic, low in embodied energy

Lynton Learning 2000

The refurbishment of the former Market Hall in Lynton incorporates a new library and Tele-centre designed by Gale & Snowden. Construction has recently finished and the building is now open to the public. The project has been funded by the Local Authority, SWERDA and LEADER



For more information visit www.ecohousing or contact Gale & Snowden Architects